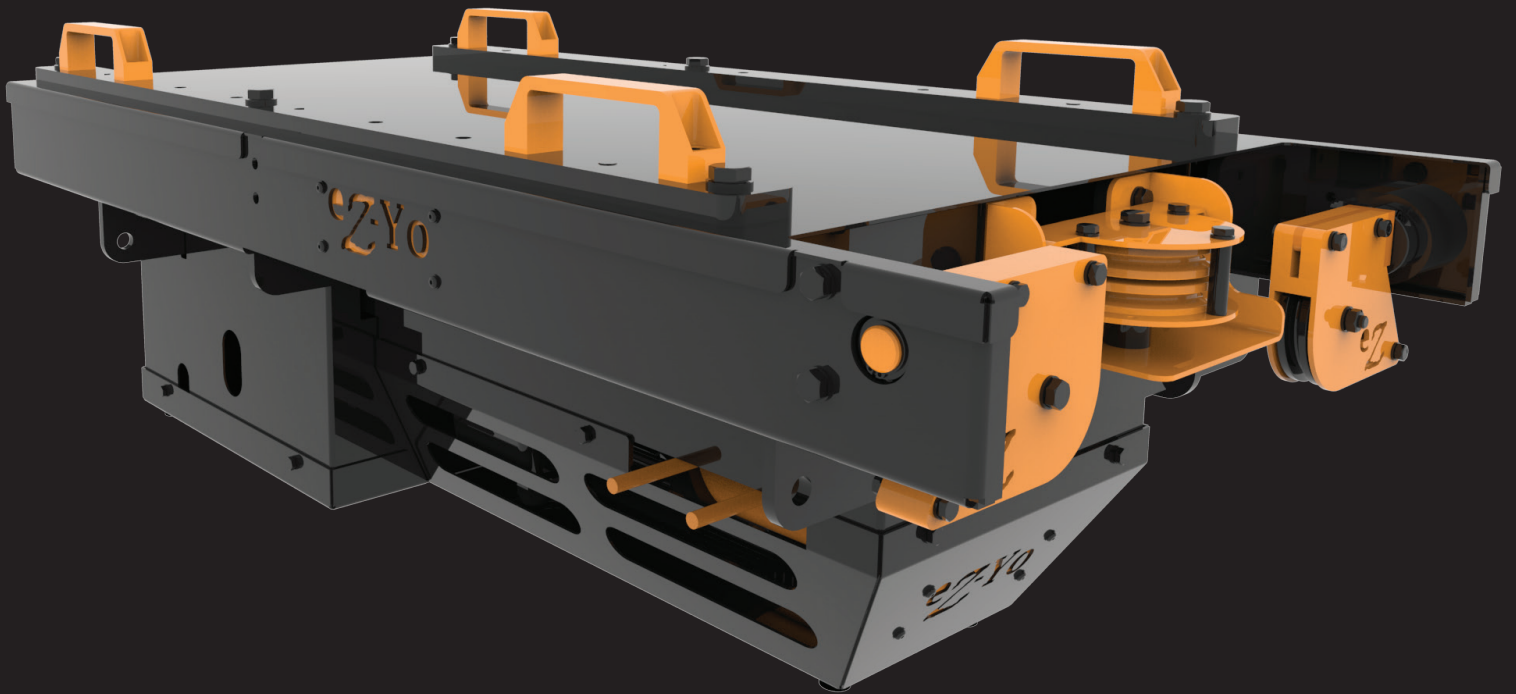




Compact and Agile



ez-Hoist

AUTOMATION MADE EASY

Integrated load cell

Compact size

Quick connection points for eZ-Trolley, eZ-Rotator, and 50cm box-truss

Multiple output pulley configurations for line placement

Built-In gimbal pulleys

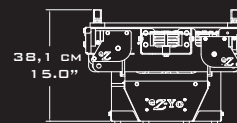
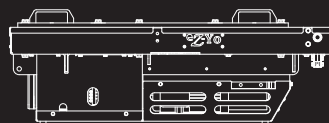
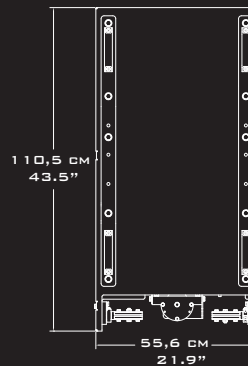
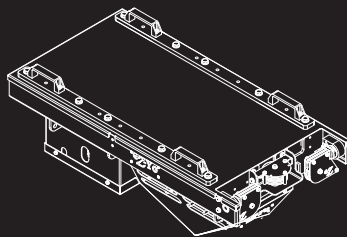
DGUV V17/18 compliant (formerly BGV-C1)

Configurations for one and two line lifting applications



eZ-Hoist eZYoyo

	STANDARD	OPTIONAL
Voltage	380-420VAC	200-230VAC, 480VAC 50/60hz
Motor Size	3kW (4HP)	----
Capacity	100kg (220lbs)	----
Speed	2 m/sec (6.5 ft/sec)	----
Lift	25 m (82 ft)	----
Wire Rope Size	4mm (5/32")	----
Motor Encoder	TTL Incremental	Sin/Cos
Absolute Encoder	SSI	Hiperface, EnDat
Weight	130 kg (287lbs)	----



WORLD HEADQUARTERS
611 Industry Road | Louisville, KY 40208
tel: +1.502.637.2500

EZ-AXIS.COM

EUROPEAN OPERATIONS
Veldzigt 3 3454 PW | De Meern, the Netherlands
tel: +31(0)30-2428280